

Job Name/Location:

Tag No.:

Date:

| | | |
|------|----------|----------|
| For: | File | Resubmit |
| | Approval | Other |

PO No.:

Architect:

GC:

Engr:

Mech:

Rep:

(Company)

(Project Manager)

ARUM192DTE5

Multi V™ 5 with LGRED° 460V ODU

16 Ton Single Frame Heat Pump and Heat Recovery

**Operating Range:**

| | |
|-----------------------|----------|
| Cooling (°F DB)** | 5 - 122 |
| Heating (°F WB) | -22 - 61 |
| Synchronous | |
| Cooling Based (°F DB) | 14 - 81 |
| Heating Based (°F WB) | 14 - 61 |

Performance:

Cooling Mode:

| | |
|--------------------------|---------|
| Nominal Capacity (Btu/h) | 192,000 |
| Power Input (kW) | 13.61 |

Heating Mode:

| | |
|--------------------------|---------|
| Nominal Capacity (Btu/h) | 216,000 |
| Power Input (kW) | 15.46 |

Rated capacity is certified under AHRI Standard 1230-2023. Ratings are subject to change without notice. Current and past certified ratings are available at www.ahridirectory.org.

Electrical:

| | |
|------------------------------------|-------------|
| Frame | ARUM192DTE5 |
| Power Supply (V/Hz/Ø) ¹ | 460/60/3 |
| MOP (A) | 50 |
| MCA (A) | 35.7 |
| Rated Amps (A) | 32.0 |
| Compressor A (A) | 14.8 |
| Compressor B (B) | 12.2 |
| Fan (A) | 5.0 |

Piping:²

| | |
|---------------------------------|-------------|
| Frame | ARUM192DTE5 |
| Refrigerant Charge (lbs.) | 30.9 |
| Liquid (in., O.D.) | 5/8 Braze |
| High Pressure Vapor (in., O.D.) | 1-1/8 Braze |
| Low Pressure Vapor (in., O.D.) | 1-1/8 Braze |

Standard Features:

- Advanced Smart Load Control
- Intelligent Heating
- HiPOR (High Pressure Oil Return)
- Smart Oil Control
- Night Quiet Operation
- Fault Detection and Diagnosis
- Active Refrigerant Control
- Variable Heat Path Exchanger
- Subcooling and Vapor Injection Control
- Liquid Cooled Inverter Controller
- Advanced Comfort Cooling

Optional Accessories:

- ☐ Air Guide - ZAGDKA52A
- ☐ Hail Guard Kit - ZHGDKA52A
- ☐ Low Ambient Baffle Kit - ZLABKA52A, Control Kit - PRVC2 (1 per system)
- ☐ Base Pan Heater - ZPLT2A51A

**Cooling range with the Low Ambient Baffle Kit (sold separately) is -9.9°F to +122°F and is achieved only when all indoor units are operating in cooling mode. Does not impact heat recovery system synchronous operating range.

For continual product development, LG reserves the right to change specifications without notice.

© LG Electronics U.S.A., Inc., Englewood Cliffs, NJ. All rights reserved. "LG Life's Good" is a registered trademark of LG Corp. /www.lghvac.com

Unit Data:

| | |
|---|--------------|
| Refrigerant Type | R410A |
| Refrigerant Control | EEV |
| Max. Number of Indoor Units ³ | 32 |
| Sound Pressure ⁴ dB(A) | 62.0 |
| Weight | |
| Frame | ARUM192DTE5 |
| Net (lbs.) | 659 |
| Shipping (lbs.) | 688 |
| Communication Cable (No x AWG) ⁵ | 2 x 18 |
| Heat Exchanger Coating | Black Fin II |

Compressor:

| | |
|------------|---------------|
| Type | HSS DC Scroll |
| Quantity | 2 |
| Oil / Type | PVE / FVC68D |

Fan:

| | |
|--------------------------------|---------------------------------------|
| Type | Propeller |
| Quantity | 2 |
| Motor Drive | Brushless Digitally Controlled Direct |
| Air Flow Rate (rated/max, CFM) | 10,300 / 11,300 |

Notes:

1. Power wiring cable size must comply with the applicable local and national codes. Cables terminate at each frame.
2. For main pipe segment size, refer to the LATS Multi V tree diagram.
3. The combination ratio must be between 50-130%.
4. Sound pressure levels are tested in an anechoic chamber under ISO Standard 3745 for the combination of outdoor units.
5. Communication cable between ODU and IDUs must be 2-conductor, 18 AWG, twisted, stranded, and shielded. Ensure the communication cable shield is properly grounded to the Main ODU chassis only. Do not ground the communication cable at any other point. Wiring must comply with all applicable local and national codes.
6. Acceptable operating voltage: 414 - 528V
7. SCCR rating: 65 kA RMS symmetrical 460V maximum.
8. Fan ESP (in wg) selectable range is 0.16 to 0.32.

LGRED°
Powerful Heat Technology



Inverter



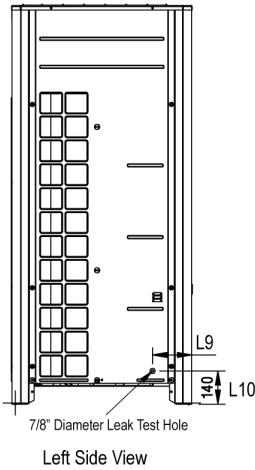
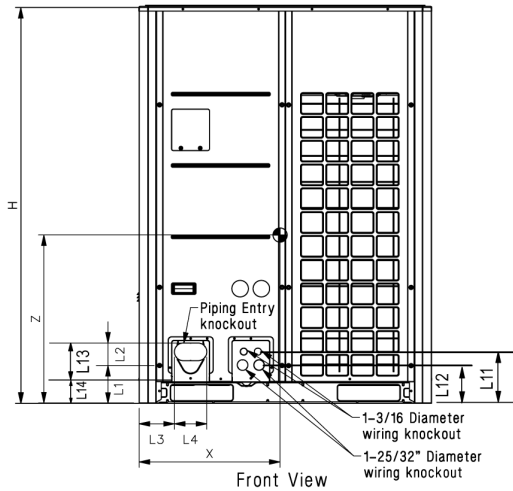
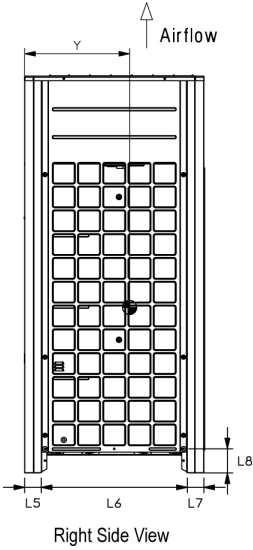
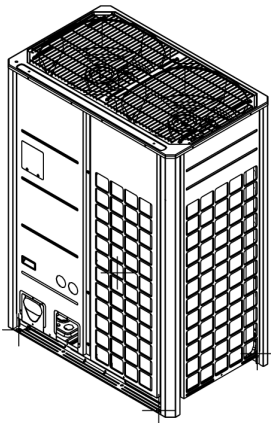
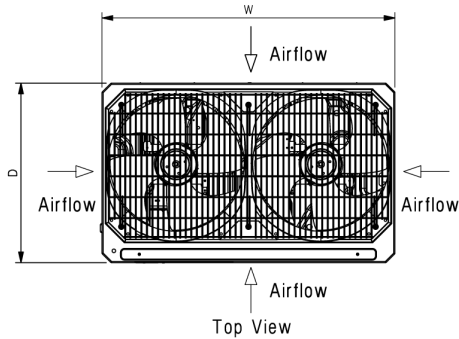
SB_MultiV_5_ODU_ARUM192DTE5_2024_02_16_134839

Page 1 of 3

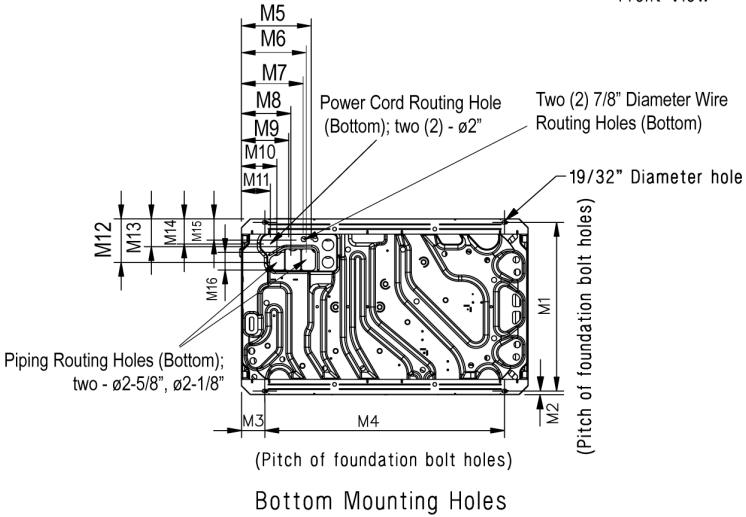
ARUM192DTE5
Multi V™ 5 with LGRED° 460V ODU
16 Ton Single Frame Heat Pump and Heat Recovery



Tag No.: _____
Date: _____
PO No.: _____



| | |
|-----|-----------|
| W | 48-13/16" |
| H | 66-17/32" |
| D | 29-29/32" |
| L1 | 6-5/16" |
| L2 | 3-3/4" |
| L3 | 5-29/32" |
| L4 | 5-13/32" |
| L5 | 2-25/32" |
| L6 | 24-9/32" |
| L7 | 2-25/32" |
| L8 | 4-1/32" |
| L9 | 6-1/2" |
| L10 | 5-9/16" |
| L11 | 8-5/8" |
| L12 | 6-7/16" |
| L13 | 9-15/16" |
| L14 | 3-5/8" |



| | |
|-----|-----------|
| M1 | 28-25/32" |
| M2 | 5/8" |
| M3 | 3-15/16" |
| M4 | 40-15/16" |
| M5 | 11-15/16" |
| M6 | 11-1/16" |
| M7 | 10-1/2" |
| M8 | 8-7/16" |
| M9 | 8-1/8" |
| M10 | 6-1/16" |
| M11 | 4-15/16" |
| M12 | 7-1/2" |
| M13 | 4-13/16" |
| M14 | 4-5/16" |
| M15 | 3-5/8" |
| M16 | 3" |

| | |
|-------------------|----------|
| Center of Gravity | |
| X | 23-7/32" |
| Y | 15-5/8" |
| Z | 25-9/16" |

All dimensions have a tolerance of ± 0.25 in.
[Unit: inch]



Job Name/Location: _____

ARUM192DTE5
Multi V™ 5 with LGRED° 460V ODU
16 Ton Single Frame Heat Pump and Heat Recovery



Tag No.: _____

Date: _____

PO No.: _____

AHRI Data:

| Reference Number | Indoor Type | Cooling Capacity (95°F) | EER (95°F) | IEER | SCHE | High Heating Capacity (47°F) | High COP (47°F) | Low Heating Capacity (17°F) | Low COP (17°F) |
|------------------|-------------------------|-------------------------|------------|------|-------|------------------------------|-----------------|-----------------------------|----------------|
| 213916312 | Ducted Indoor Units | 184,000 | 10.5 | 19.9 | 22.77 | 206,000 | 3.30 | 134,000 | 2.41 |
| 213916306 | Non-Ducted Indoor Units | 184,000 | 9.9 | 21.4 | 23.94 | 206,000 | 3.75 | 134,000 | 2.64 |

Rated capacity and efficiency data are certified under AHRI Standard 1230-2023. Ratings are subject to change without notice. Current and past certified ratings are available at www.ahridirectory.org.